

## Repairs for Small Cracks on Nomblot MC7 Eggs

**Step 1 :** Empty the tank, and give a very good clean to the inside with peroxy or caustic, trying to eliminate the tartrate barrier on the inside of the tank (this will inhibit the epoxy from sticking. Take a fine power sander, and lightly sand the exterior of the tank, where you see the leaking (this will help expose the cracking and indicate where you will need to work to make the repair.

Before Repair.

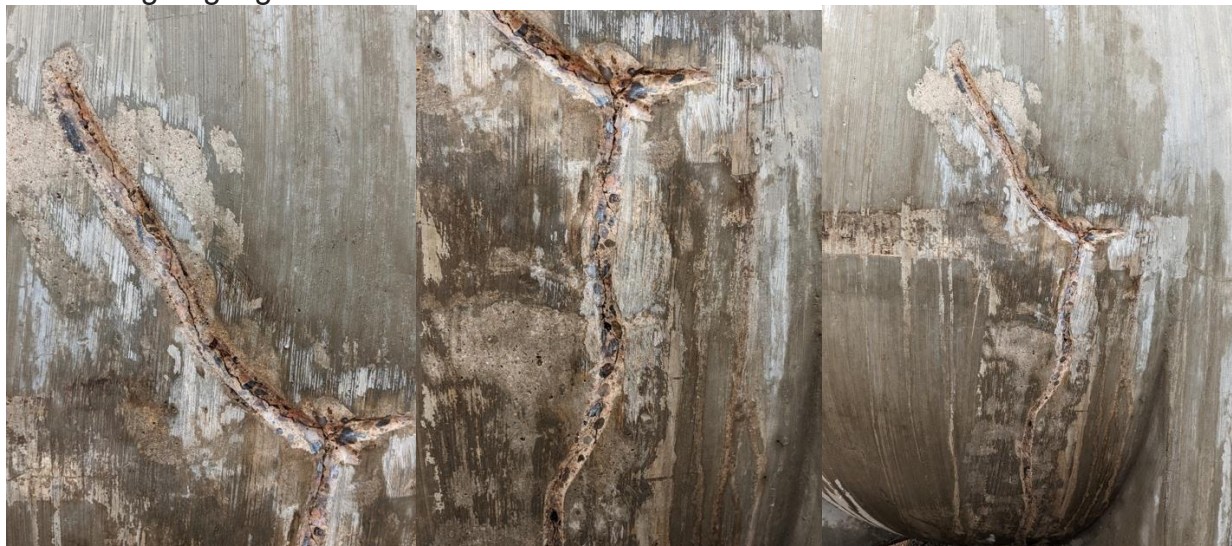


After light sanding:



**Step 2:** Using an angle-grinder, follow the cracking, digging-in a “trench” surrounding the crack. Be sure to extend your cuts beyond the end of the visible cracking to ensure you are sealing off the fracture. The walls of the tank are approximately 10cm thick (slightly thicker towards the bottom of the Eggs/Dolia shapes) so aim to cut in about 5-6cm deep.

After using angle grinder to follow fracture:



**Step 3:** Using a slurry of Portland Cement and a Latex-based bonding adhesive (helps new concrete bond to old concrete), apply concrete to the crack areas, paying particular attention to push the concrete into the crack and fill the “trench”. You need to work quickly to avoid the concrete from drying out as you manipulate it.

You will need to apply several layers (3-4 layers) of concrete, and allow the previous layer to dry completely before adding the next one. This will take a few hours, depending on temperature and humidity. You will need to make up a new concrete slurry with each new coat, so be conservative at first when mixing the concrete.

If you have large “bumps” of concrete you can use a fine sandpaper to sand down and flatten after the coat dries, and you are ready to apply another.

Layer 1 (almost dry):



Layer 2:



Layer 3:



**Step 4:** Wait several days for the concrete to dry fully (do not leave the vessel outside).



**Step 5:** Mix the Deproma Choc Contact Viti Epoxy as directed in the product details. Using a Puddy Knife (spatula) on an extender to spread the epoxy on the inside of the egg, mirroring where you made the cut to the outside of the tank. Be sure to spread the epoxy past the edges of the crack to be sure you are sealing the tank completely.

From Above:



Close up:



**Step 6:** Use the remaining Deproma Choc Contact Epoxy to spread and cover the repair on the exterior of the egg (being sure to spread the epoxy all the way to the edges of the repair)



**Step 7:** Follow the instructions for the Deproma Choc Contact Epoxy for total days to dry and the rinsing process once the epoxy has set. (**Always rinse with water cooler than 90 degrees F**)

**Step 8:** Re-season the interior of your tank with a 30% tartaric solution (as indicated in the Nomblot Maintenance Guide)

**Step 9:** Apply the special Microporous Lasure Paint to the exterior of your tank to hide the Epoxy and repair, and having it looking like new ! (Leave several days to fully dry before refilling the vessel with wine).

